

EMBER™

EQUNE

BY JUNIPER SYSTEMS



ULTRASOUND REPRODUCTION SOLUTION

EmberEquine™ is the ideal solution for equine veterinarians seeking an efficient way to perform mare ultrasounds and keep mare records. As a completely wireless touchscreen-operated solution, users can capture ultrasound measurements directly on the Draminski 4VetJ Ultrasound™ screen, collection mare data on the waterproof Mesa 2 Rugged Tablet™, and securely store and access organized mare information with the touch of a finger.

Solution Components



Draminski 4VetJ Ultrasound
Designed to perform complex imaging diagnostics

- Touchscreen interface for accurate ultrasound measurements
- All-day battery life
- Wireless connectivity
- Optimized tilt stand and cord wrap



Mesa 2 Rugged Tablet
Your office computer, anywhere

- Completely dustproof, waterproof, shockproof
- Runs full Windows 10 OS
- Responsive Dragontail™ glass touchscreen
- All-day battery life

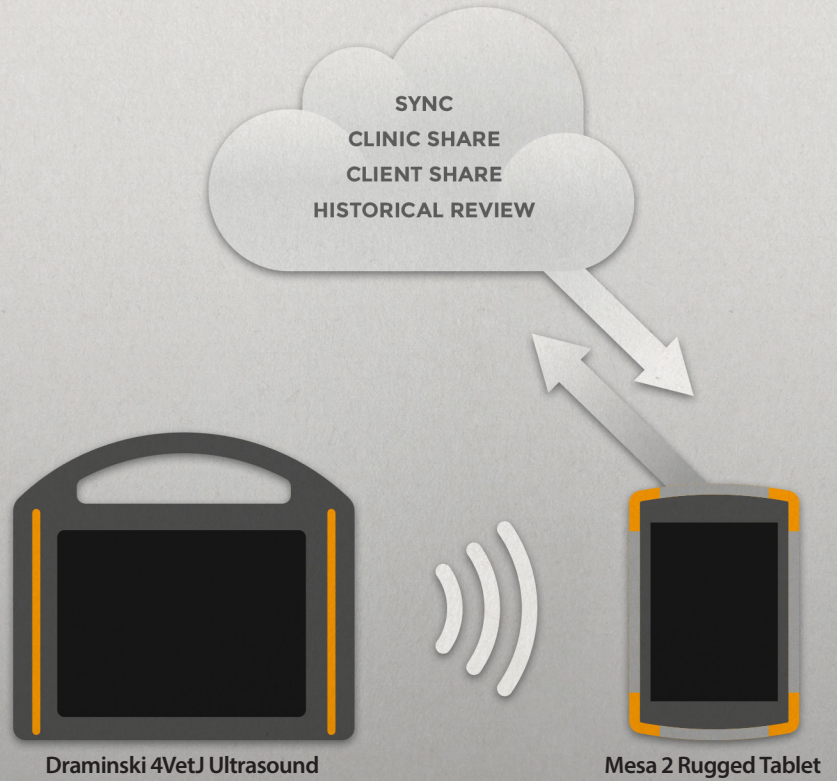


EmberEquine Software
Quickly enter, store, and access mare records

- Simple design for quick navigation
- All records stored securely on the cloud and Mesa 2
- Convenient mare record sharing
- Customizable fields on data entry forms

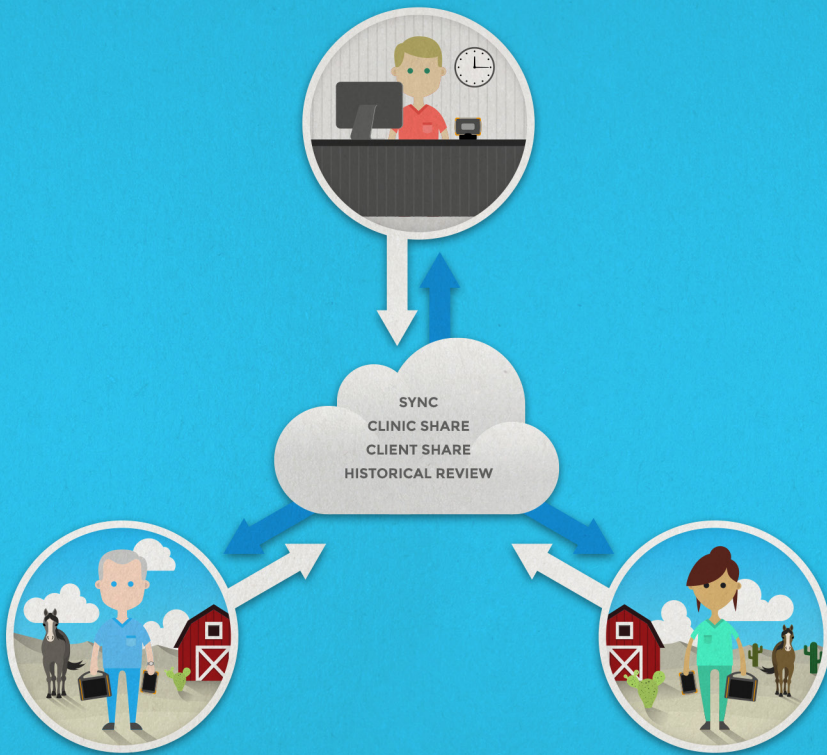
How EmberEquine Works

- Launch EmberEquine software and enter mare information using the customizable exam form.
- Perform the exam and tap 4VetJ screen to record measurements.
- Send ultrasound images, including measurements and metadata, from the 4VetJ to the Mesa 2 with the touch of a finger.
- On the Mesa 2, save an organized exam record, including ultrasound images and exam information, to the Mesa 2 and Microsoft Cloud for secure storage.
- Access and safely share information anytime, anyplace, anywhere.



Solution Benefits:

- Easy-to-use software, with options for customization to fit the needs of your practice.
- Secure data storage with the ability to enter, access, and share data anywhere.
- All-day battery keeps up with the busy schedule of equine practitioners.
- Intuitive data entry and storage, attaches ultrasound images to data collected.
- Mobile touchscreen solution provides a quick setup and efficient exam process.



For more information, visit www.emberequine.com