

Quick Start Guide

Get your ultra-rugged **Field PC** field ready.

Step One: Install the battery pack

1a. Undo the bottom hook of the hand strap. **WARNING!** Use caution when unhooking the strap to avoid injury or screen damage.

1b. Press on the battery door and slide the latch to the right.

1c. Remove the battery door.

1d. Insert the battery pack so battery contacts mate with Field PC contacts.

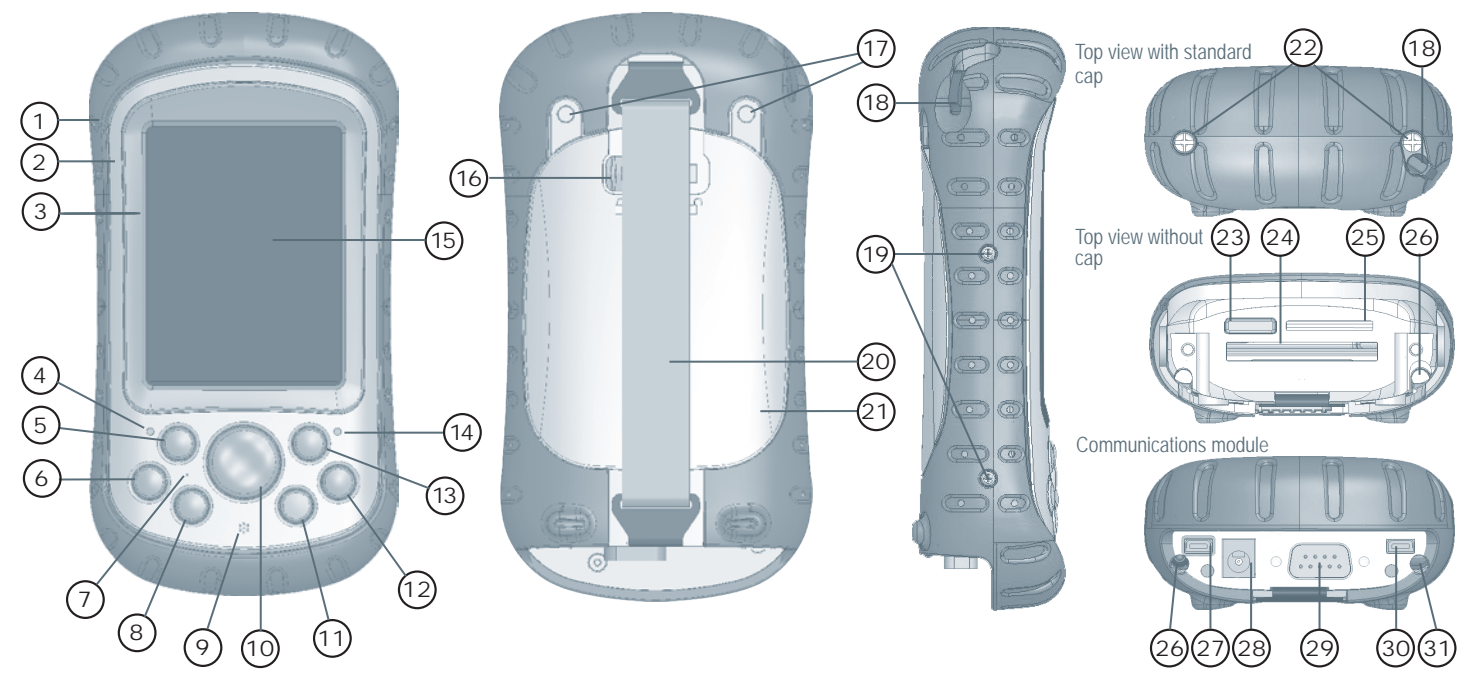
1e. Insert the tabs on the bottom of the battery door into the case slots. Close the battery door.

1f. Press on the battery door. Slide the latch to the left to lock it.

1g. Reattach the hand strap.

The anatomy of your Field PC

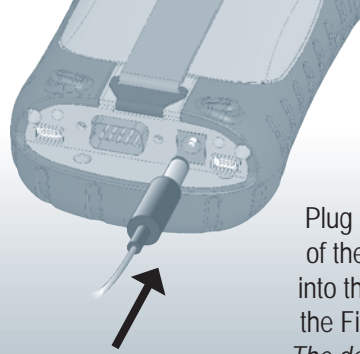
- | | |
|--------------------------------|---|
| 1 Elastomer overmold | 16 Battery door latch |
| 2 Magnesium case front | 17 Accessory attachment points |
| 3 Display bezel | 18 Stylus |
| 4 Charge LED | 19 Body molding screws |
| 5 Start menu button | 20 Hand strap |
| 6 Applications Manager button | 21 Battery door |
| 7 Microphone | 22 Standard cap screws |
| 8 Today screen button | 23 Cover for Bluetooth antenna (optional) |
| 9 Speaker | 24 Compact Flash card slot |
| 10 Four-way directional button | 25 Secure Digital I/O card slot |
| 11 Power button | 26 Stylus slot |
| 12 Context menu button | 27 USB Client (mini B) |
| 13 Enter button | 28 12V DC jack |
| 14 Notification LED | 29 9-pin serial port |
| 15 Touchscreen/display | 30 USB Host (mini A) |
| | 31 Cable routing channel |



Step Two: Charge the battery pack

2a.

Mount the plug onto the wall charger (if it is not already assembled) and plug the wall charger into an outlet.



2b.

Plug the other end of the wall charger into the DC jack on the Field PC. *Note: The device turns on after a few seconds.*

2c.

A flashing red light signals the device is charging. Charge six hours for full charge. *Note: If the Field PC suspends and the flashing red LED turns off, the device keeps charging.*



Step Three: Establish settings

3a.

Using the stylus, follow the instructions on the display to calibrate the device and establish basic settings. *Note: To best protect the touchscreen, first apply a screen protector.*



3b.

Create a device name for synchronization by tapping *Start > Settings > About > Device ID* tab.

Your Field PC is now field ready. **Important:** Read the license agreement before using the Field PC.

Microsoft® Windows® 2000 or XP® users: Follow Step 4 to install ActiveSync®, a program that lets you install applications onto your Field PC.

Microsoft Windows Vista® users: You have basic file sync capability with your desktop computer without installing any additional software. To use these basic sync options, connect the Field PC and desktop PC with a USB cable. For full sync support, download and install Microsoft Windows Mobile Device Center®.

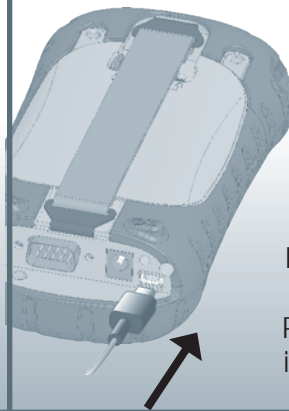
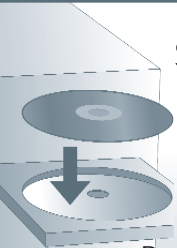
Quick Reference Information

Action	Steps
Suspend and resume the Field PC	To suspend the device, press the power button briefly and release. <i>Note: To wake the device from suspend, press the power button again.</i>
Reset or turn off the device	<ol style="list-style-type: none"> Hold down the power button for about 4 seconds. A menu appears. Tap <i>Reset</i> or <i>Power Off</i>, then tap <i>OK</i> or <i>Cancel</i> if you are powering off.
Manually reset the device	Hold down the power button for 10 seconds or until the screen goes dark. The Field PC resets after a few seconds.
Turn off the backlight	<ol style="list-style-type: none"> Tap <i>Start > Settings > System > Brightness</i>. In the Brightness window that appears, tap the Battery Power tab. Drag the Backlight slider all the way to the left (Dim). If the light does not turn off, tap the Dim arrow once.
Manage open applications	<ol style="list-style-type: none"> Tap on the Applications Manager icon or press the button . Select a program and choose <i>Activate</i> (switch programs), <i>Stop</i>, or <i>Stop All</i>.
Insert or remove CF or SD cards	<ol style="list-style-type: none"> Suspend the device. Remove the stylus from its slot. Unscrew the top cap screws with a screwdriver until you can remove the top cap from the device. Do not try to remove the screws from the top cap. CAUTION: When the top cap is removed, the device is not sealed. Insert or remove the card. Replace the top cap and tighten the screws. (See the user manual for torque specs.)
Replace the battery pack	<ol style="list-style-type: none"> Suspend the device. Follow Steps 1A through 1G of this quick start guide, removing the battery pack after Step 1C.
Use on-device help	<ol style="list-style-type: none"> Tap <i>Start > Help</i>. (For application-specific help, open the application first.) Select an option from the Help menu or tap on the <i>Contents</i> or <i>Search</i> keys at the bottom of the screen.
Access the user documentation	Open the User Documentation CD, which contains the reference guide, the license agreement, and a copy of this guide.

Step Four: Create a connection with a desktop computer

4a.

Run the *Getting Started Disc* on your desktop computer and follow the screen directions for installing the latest version of ActiveSync®. Do this before attaching the USB cable to the desktop or Field PC.

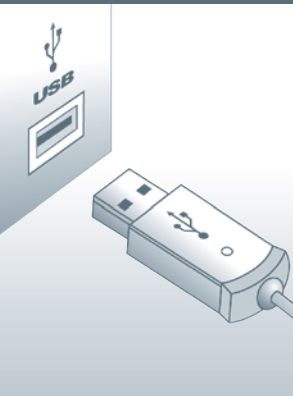


4b.

Plug the USB Client end (mini B) into your Field PC when the ActiveSync instructions direct you to.

4c.

Plug the USB host end (full size A) into your desktop computer.



4d.

Establish a partnership by following the instructions on the desktop computer screen.

