

Recommended settings for using ArcPad with the Archer 2

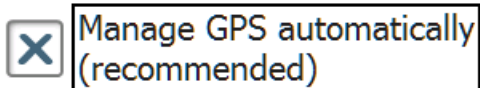
On the Archer 2 (tap and hold on the GPS Satellite icon to bring up the GNSS settings):



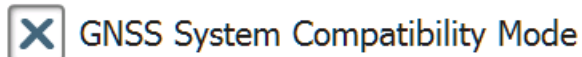
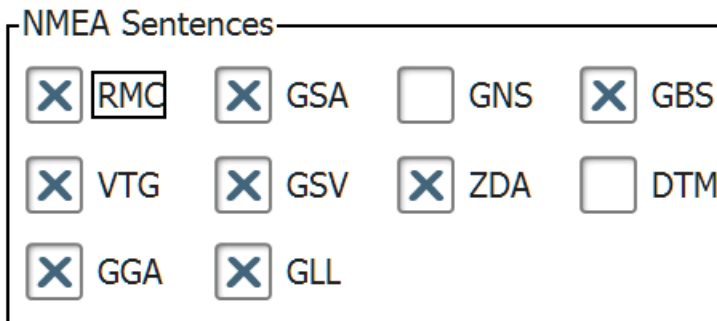
Program port – COM 2

Hardware port – COM 8, baud rate 115200

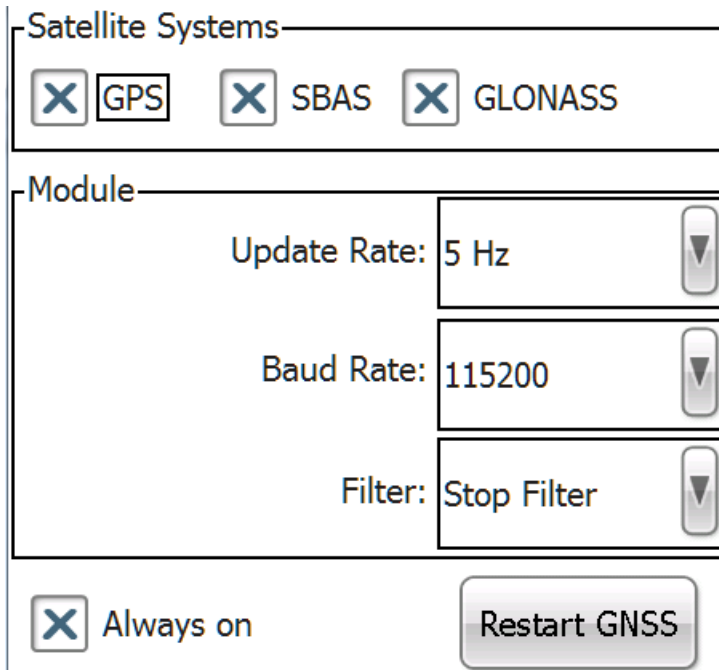
Access tab – check box is checked – Manage GPS Automatically



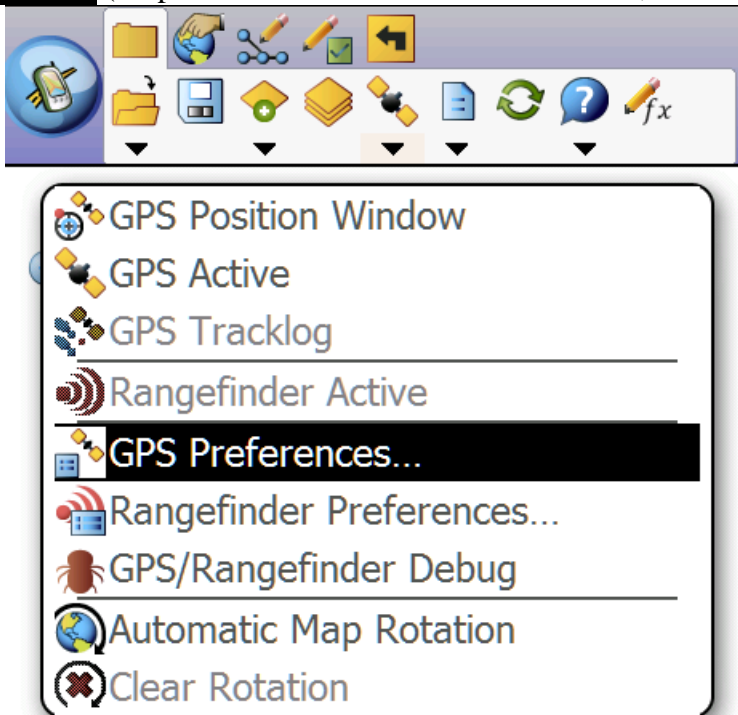
NMEA Sentences – RMC, VTG, GGA, GSA, GSV, GLL, ZDA, GBS, GNSS Compatibility mode is on



GNSS System – GPS, GLONASS, SBAS all checked on; Update rate – 5 Hz, Baud rate – 115200, Filter – Stop filter, Always on checked on



In ArcPad (drop arrow down under the Satellite icon, choose GPS Preferences):



GPS:

Protocol – NMEA 0183

Port – COM 2

Baud – 115200

Other settings are up the user's discretion

Here are my settings:
GPS

Protocol **NMEA 0183**

Port **COM2:**

Baud **115200**

Automatically Activate

Show GPS Activity in System Tray

Automatically Pan View

Log

Capture

Enable Averaging

Number of positions to average :

Points **10**

Vertices **5**

Streaming :

Position Interval **1**

Distance Interval **10** m

Quality

No Warnings

Non-Compulsory Warnings

Compulsory Warnings

Maximum **PDOP** **5**

Maximum **EPE**

DGPS Only

3D Mode Only